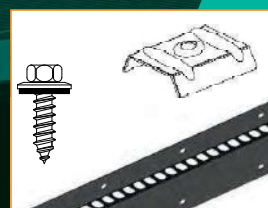


Geïsoleerde sandwichpanelen

overzicht
accessoires



**CLADDING
POINT**

Business Line
Sandwichpanelen
by Cladding Point

Overzicht accessoires

Opgesteld door: Cladding Point B.V.
Auteur: Dhr. P. Heijblom

Documentnummer: 1854812.16-1
Aantal pagina's: 29 stuk(s)

Uitgifte overzicht

Uitgifte	Datum:	Omschrijving
1.	08.07.2020	1 ^{ste} versie

Inhoudsopgave

1. Paneeldrager	Pag. 3
2. Zetwerk wanden (horizontaal)	Pag. 4
3. Zetwerk wanden (verticaal)	Pag. 10
4. Zetwerk voor dakpanelen	Pag. 19
5. Zetwerk voor gekoelde ruimte	Pag. 26
6. Toebehoren	Pag. 29

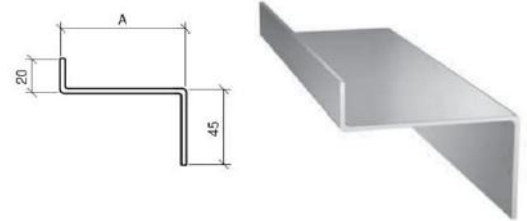
Artikelcode: LS-1

Paneeldrager A

Voor paneel type Beta (zichtbaar)

Sandwichpaneel dikte [mm]	40	60	80	100	120	150	160	180	200
Ontwikkelde breedte [mm]	88	108	128	148	168	198	208	228	248
A [mm]	31	51	71	91	111	141	151	171	191

detail 1.1



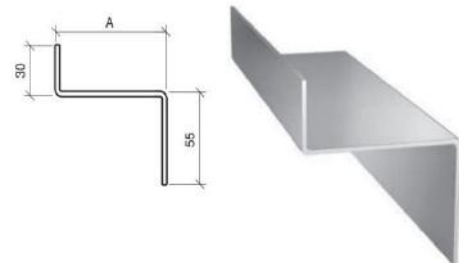
Artikelcode: LS-2

Paneeldrager B

Voor paneel type Alpha (verdekt)

Sandwichpaneel dikte [mm]	60	80	100	120
Ontwikkelde breedte [mm]	113	133	153	173
A [mm]	36	56	76	96

detail 1.2



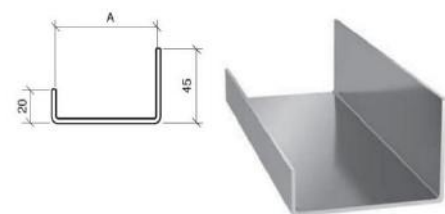
Artikelcode: LS-3

Paneeldrager C

Voor paneel type Beta (zichtbaar)

Sandwichpaneel dikte [mm]	40	60	80	100	120	150	160	180	200
Ontwikkelde breedte [mm]	91	111	131	151	171	201	211	231	251
A [mm]	30	50	70	90	110	140	150	170	190

detail 1.3



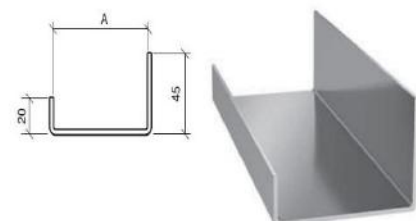
Artikelcode: LS-4

Paneeldrager D

Voor paneel type Alpha (verdekt)

Sandwichpaneel dikte [mm]	60	80	100	120
Ontwikkelde breedte [mm]	99	119	139	159
A [mm]	38	58	78	98

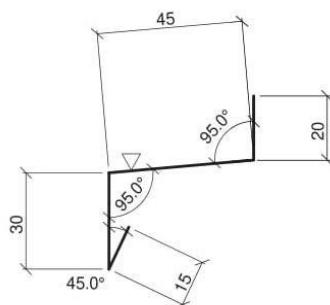
detail 1.3



Artikelcode: OBPZ-1

Lekdorpel A

Sandwichpaneel dikte [mm]	40-200
Ontwikkelde breedte [mm]	110

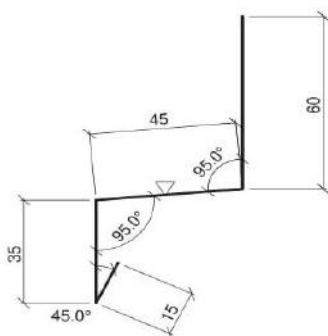


detail 1.1

Artikelcode: OBPZ-2

Lekdorpel B

Sandwichpaneel dikte [mm]	40-200
Ontwikkelde breedte [mm]	155

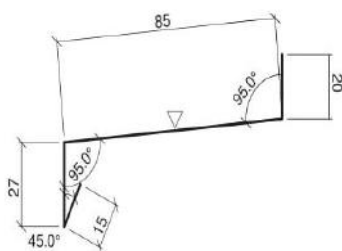


detail 1.2

Artikelcode: OBPZ-3

Lekdorpel C

Sandwichpaneel dikte [mm]	40-200
Ontwikkelde breedte [mm]	147



detail 1.3

Artikelcode: OBPZ-4

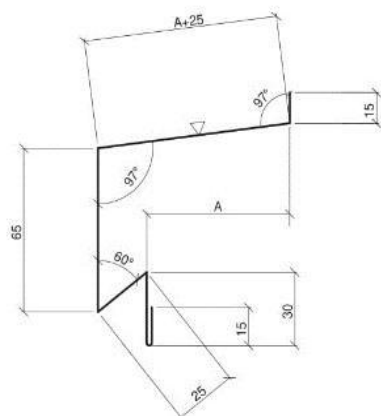
Raamdorpel

Sandwichpaneel dikte [mm]

40-200

Ontwikkelde breedte [mm]

Breedte opgeven



detail 1.12



Artikelcode: OBPZ-5

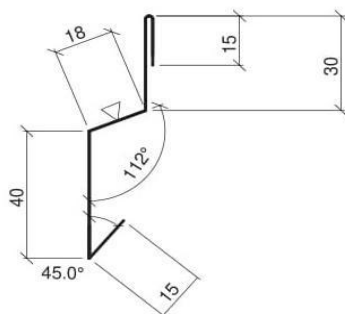
Lekdorpel

Sandwichpaneel dikte [mm]

40-200

Ontwikkelde breedte [mm]

118



detail 1.12, 1.13, 2.7



Artikelcode: OBPZ-6

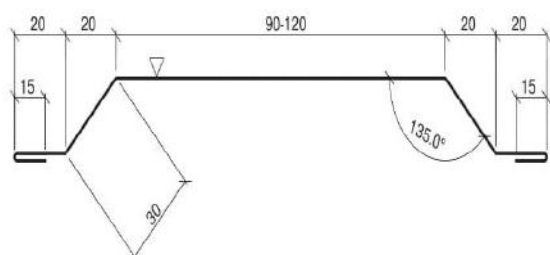
Afdekprofiel A

Sandwichpaneel dikte [mm]

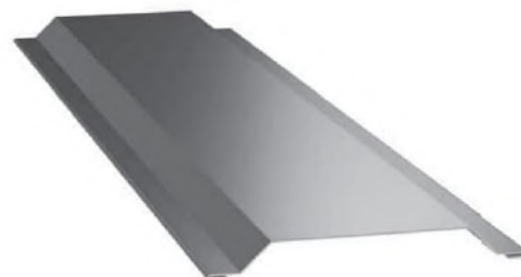
40-200

Ontwikkelde breedte [mm]

220-250



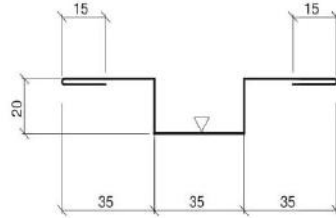
detail 1.4, 1.7, 1.9



Artikelcode: OBPZ-7

Afdeksprofiel B

Sandwichpaneel dikte [mm]	40-200
Ontwikkelde breedte [mm]	175

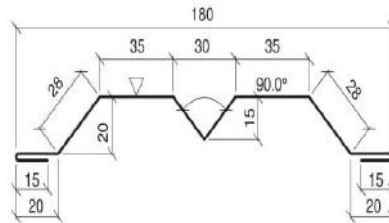


detail 1.5

Artikelcode: OBPZ-8

Afdeksprofiel C

Sandwichpaneel dikte [mm]	40-200
Ontwikkelde breedte [mm]	238

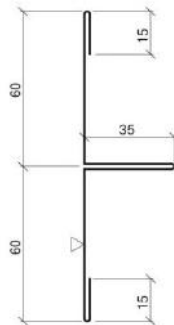


detail 1.6

Artikelcode: OBPZ-9

Afdeksprofiel met voeg

Sandwichpaneel dikte [mm]	40-200
Ontwikkelde breedte [mm]	220

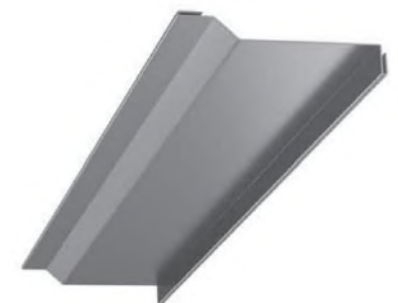
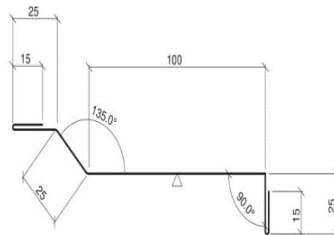


detail 1.11

Artikelcode: OBPZ-10

Afdeksprofiel inwendige hoek

Sandwichpaneel dikte [mm]	40-200
Ontwikkelde breedte [mm]	205

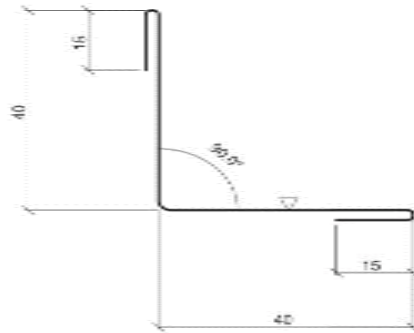


detail 1.10

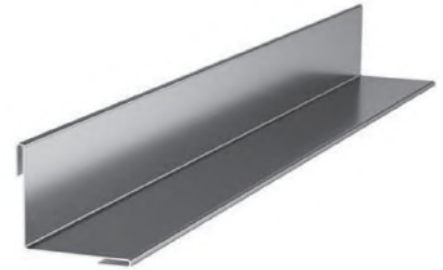
Artikelcode: OBPZ-11

Hoekprofiel binnen

Sandwichpaneel dikte [mm]	40-200
Ontwikkelde breedte [mm]	110



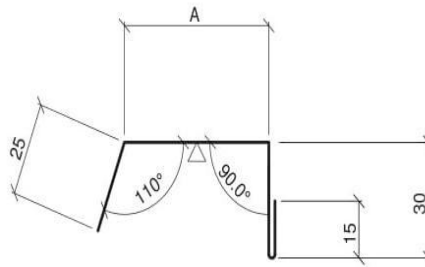
detail 1.12



Artikelcode: OBPZ-12

Kozijnprofiel - boven

Sandwichpaneel dikte [mm]	80	100
Ontwikkelde breedte [mm]	95	115
A [mm]	25	45



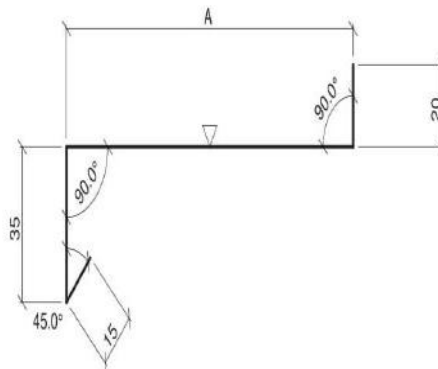
detail 1.12



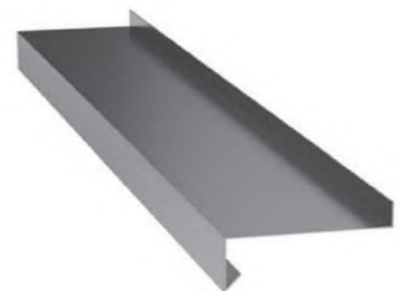
Artikelcode: OBPZ-13

Deurprofiel

Sandwichpaneel dikte [mm]	40	60	80	100
Ontwikkelde breedte [mm]	125	145	165	185
A [mm]	55	75	95	115



detail 1.13

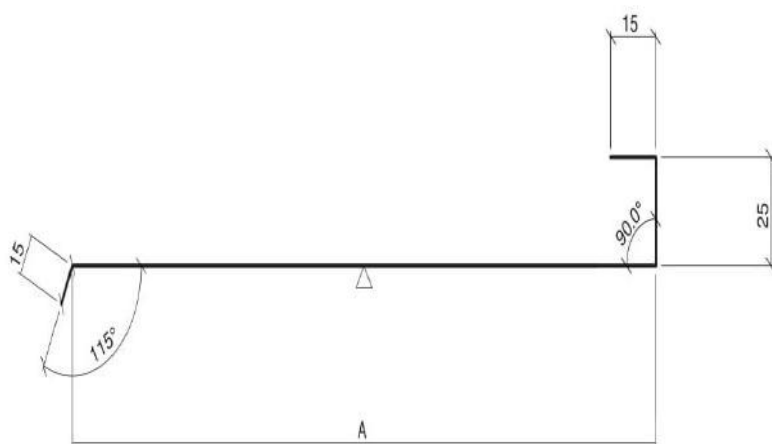
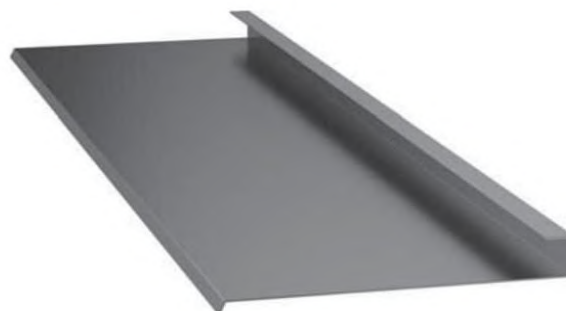


Artikelcode: OBPZ-14

Deurprofiel

Sandwichpaneel dikte [mm]	40	60	80	100
Ontwikkelde breedte [mm]	205	225	245	265
A [mm]	150	170	190	210

detail 1.13

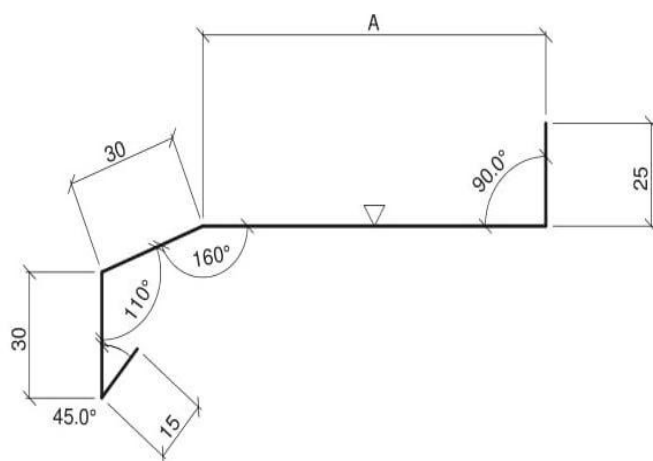
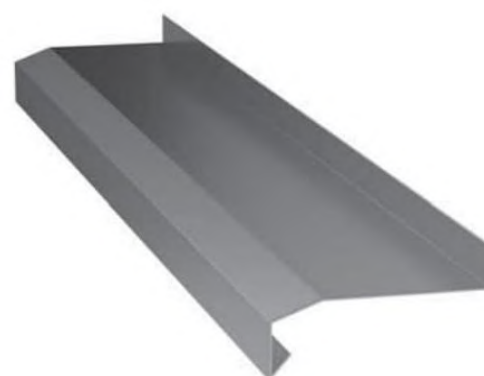


Artikelcode: OBPZ-15

Kozijnprofiel - boven

Sandwichpaneel dikte [mm]	40	60	80	100
Ontwikkelde breedte [mm]	134	154	174	194
A [mm]	34	54	74	94

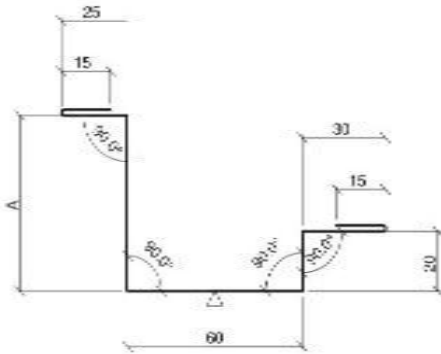
detail 1.12



Artikelcode: OBPZ-16

Deurprofiel

Sandwichpaneel dikte [mm]	80	100	120
Ontwikkelde breedte [mm]	200	220	240
A [mm]	35	55	75



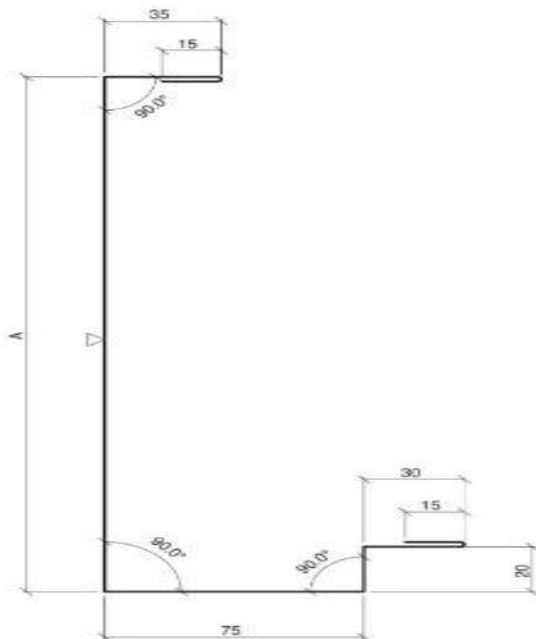
detail 1.12



Artikelcode: OBPZ-17

Kozijnprofiel

Sandwichpaneel dikte [mm]	40	60	80	100
Ontwikkelde breedte [mm]	345	365	385	405
A [mm]	155	175	195	215



detail 1.13



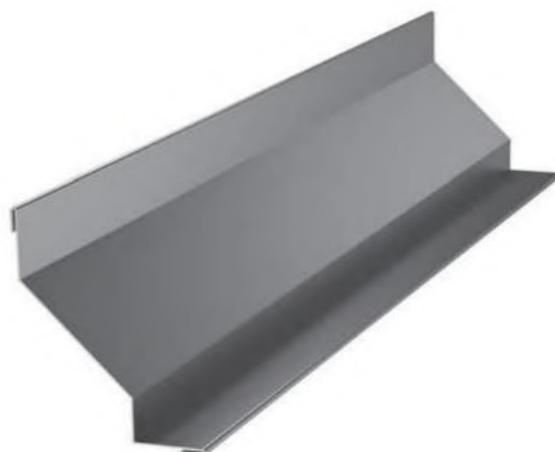
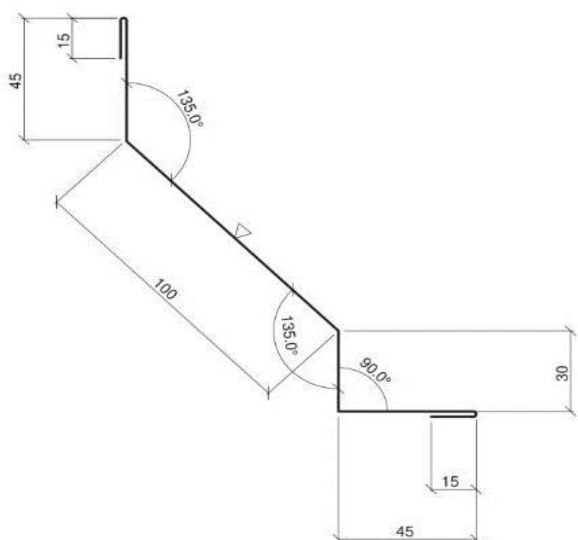
Artikelcode: OBPI-1

Stootprofiel binnen

detail 2.2, 2.3

Sandwichpaneel dikte [mm]	40-200
---------------------------	--------

Ontwikkelde breedte [mm]	250
--------------------------	-----



Artikelcode: OBPI-2

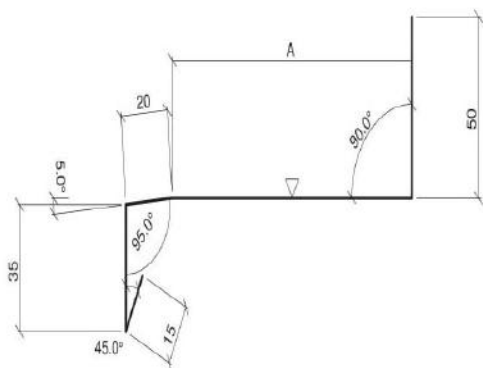
Lekdorpel

detail 2.2

Sandwichpaneel dikte [mm]	60	80	100	120
---------------------------	----	----	-----	-----

Ontwikkelde breedte [mm]	184	204	224	244
--------------------------	-----	-----	-----	-----

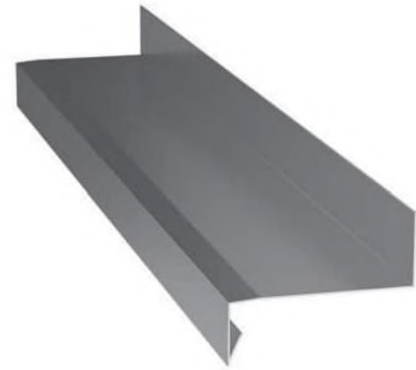
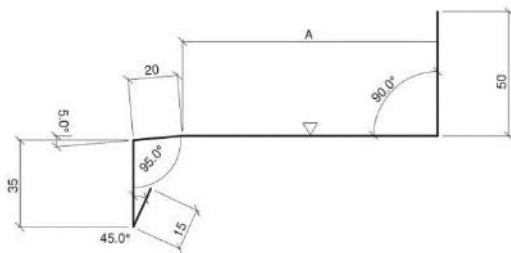
A [mm]	64	84	104	124
--------	----	----	-----	-----



Artikelcode: OBPI-3

Kozijnprofiel - boven

Sandwichpaneel dikte [mm]	60	80	100	120
Ontwikkelde breedte [mm]	145	165	185	205
A [mm]	75	95	115	135

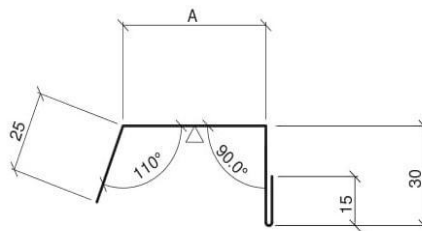


detail 2.11

Artikelcode: OBPI-4

Kozijnprofiel - boven

Sandwichpaneel dikte [mm]	80	100	120
Ontwikkelde breedte [mm]	97	117	137
A [mm]	27	47	67

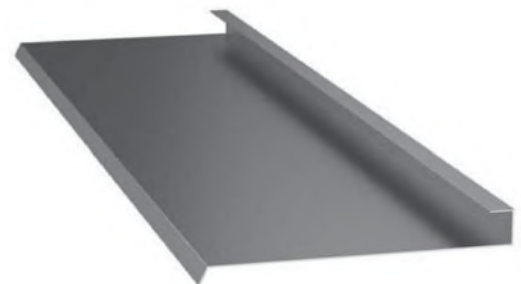
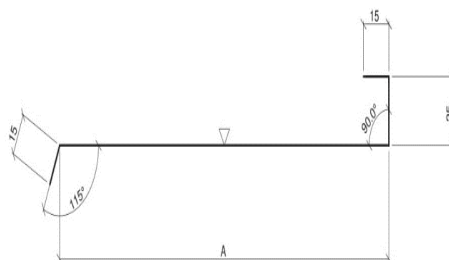


detail 2.10

Artikelcode: OBPI-5

Deurprofiel

Sandwichpaneel dikte [mm]	60	80	100	120
Ontwikkelde breedte [mm]	225	245	265	285
A [mm]	170	190	210	230

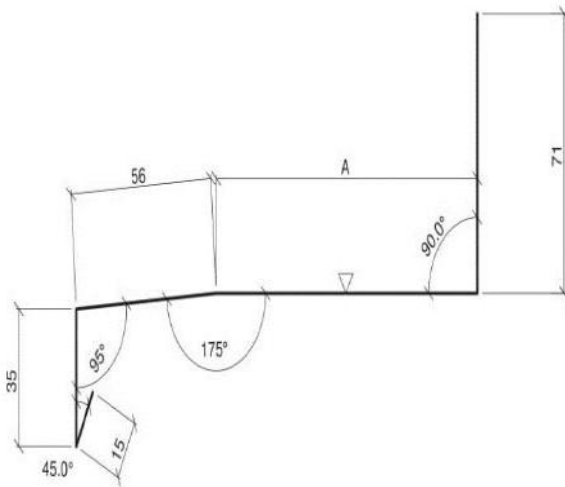


detail 2.11

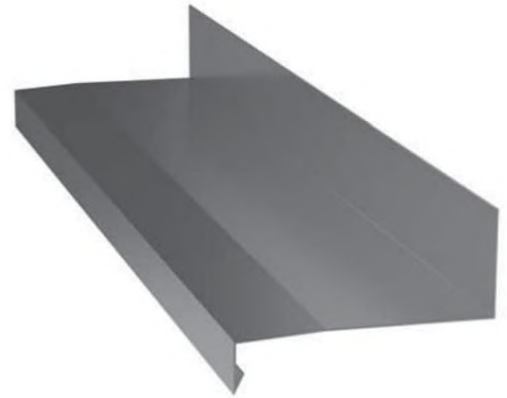
Artikelcode: OBPI-6

Lekdorpel

Sandwichpaneel dikte [mm]	60	80	100	120
Ontwikkelde breedte [mm]	225	245	265	285
A [mm]	170	190	210	230



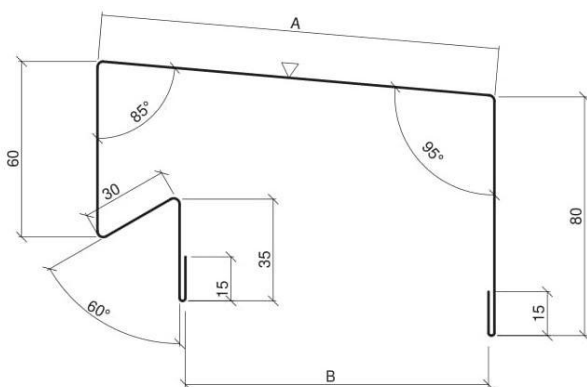
detail 2.3



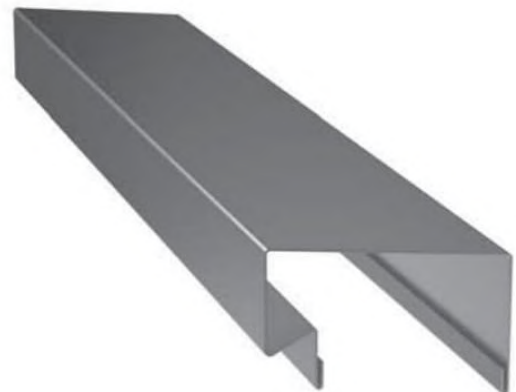
Artikelcode: OBPI-7

Dakrand profiel

Sandwichpaneel dikte [mm]	60	80	100	120
Ontwikkelde breedte [mm]	331	351	371	391
A [mm]	96	116	136	156
B [mm]	63	83	103	123



detail 2.4

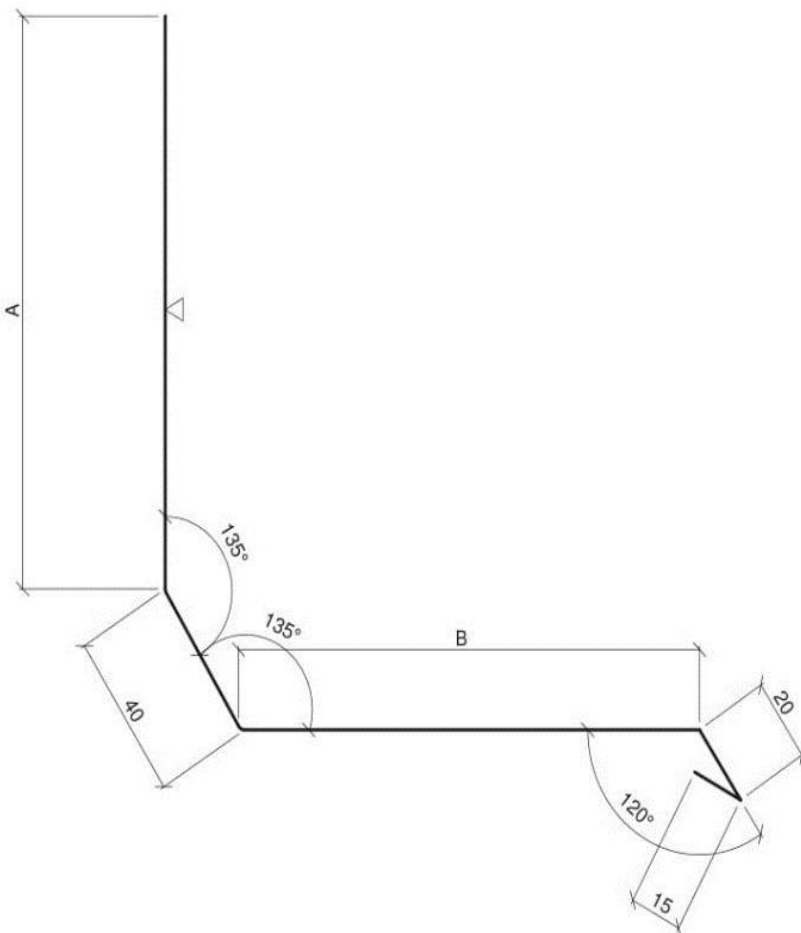
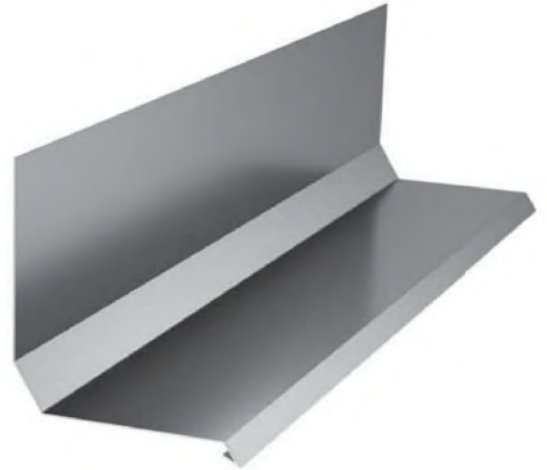


Artikelcode: OBPI-8

Hoekprofiel

Sandwichpaneel dikte [mm]	60	80	100	120
Ontwikkelde breedte [mm]	234	274	314	354
A [mm]	96	116	136	156
B [mm]	63	83	103	123

detail 2.4

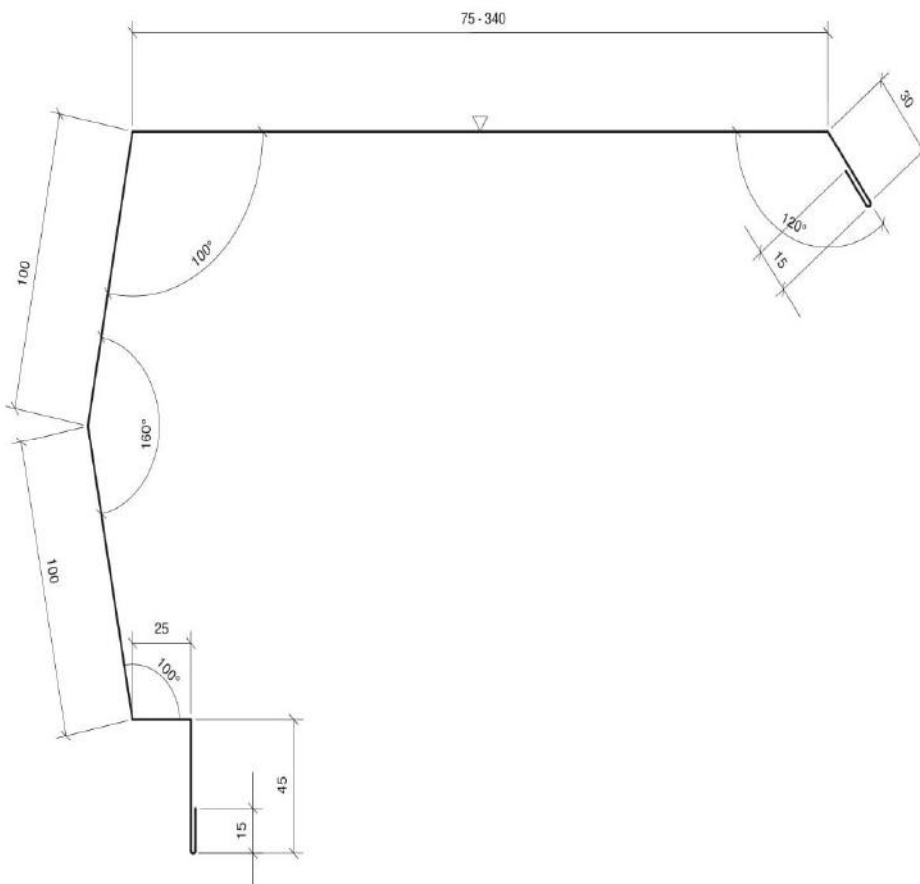
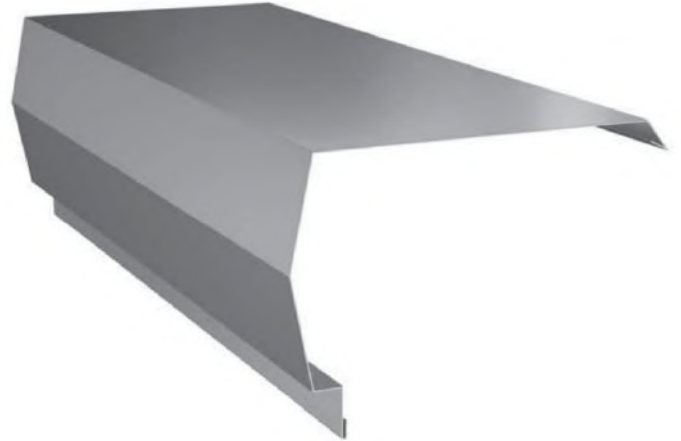


detail 2.5

Artikelcode: OBPI-9

Dakrand profiel

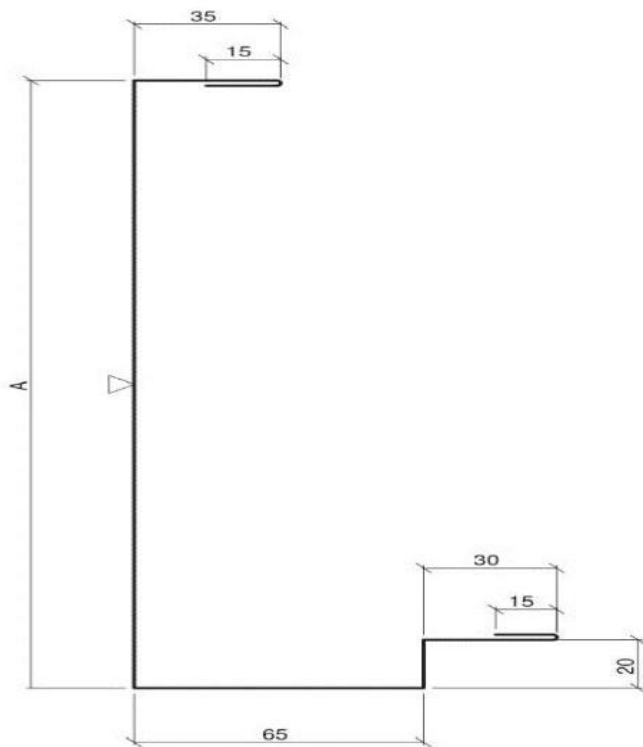
Sandwichpaneel dikte [mm]	Dak sandwichpaneel 40-200
	Wand sandwichpaneel 40-120
Ontwikkelde breedte [mm]	405-670



Artikelcode: OBPI-10

Zijprofiel industriedeur

Sandwichpaneel dikte [mm]	60	80	100	120
Ontwikkelde breedte [mm]	355	375	395	415
A [mm]	175	195	215	235

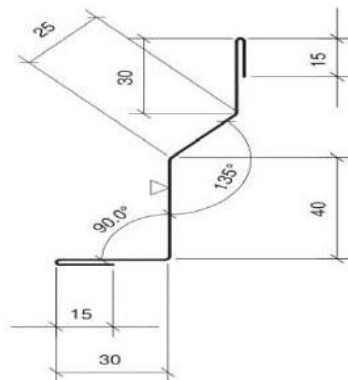


detail 2.11

Artikelcode: OBPI-11

Afdekprofiel A

Sandwichpaneel dikte [mm]	40-200
Ontwikkelde breedte [mm]	155

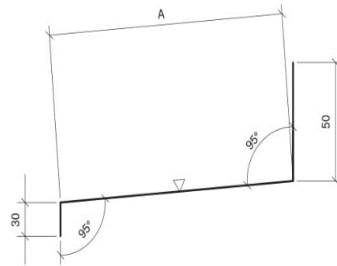


detail 2.6

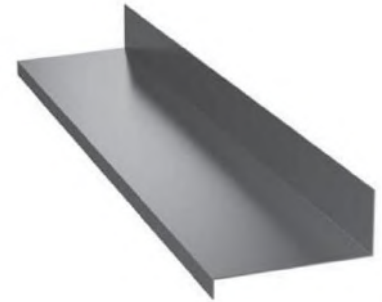
Artikelcode: OBPI-12

Lekdorpel B

Sandwichpaneel dikte [mm]	60	80	100	120
Ontwikkelde breedte [mm]	157	177	197	217
A [mm]	77	97	117	137



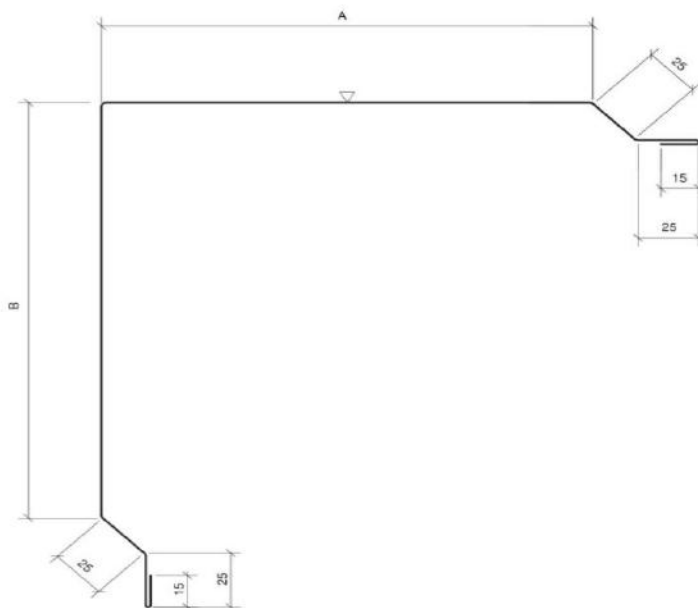
detail 2.7



Artikelcode: OBPI-13

Uitwendig hoekprofiel

Sandwichpaneel dikte [mm]	40	60	80	100	120
Ontwikkelde breedte [mm]	402	442	482	522	562
A [mm]	136	156	176	196	216
B [mm]	136	156	176	196	216



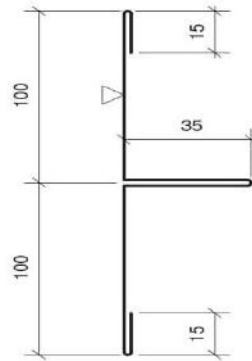
detail 1.8, 2.8



Artikelcode: OBPI-14

Afdekprofiel met voeg

Sandwichpaneel dikte [mm]	40-200
Ontwikkelde breedte [mm]	300



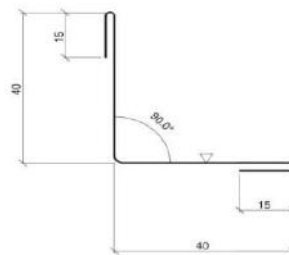
detail 2.9



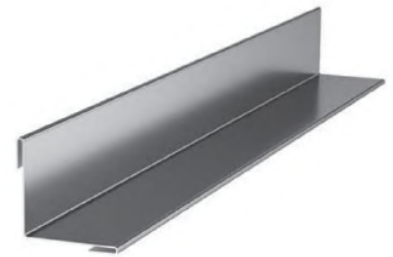
Artikelcode: OBPI-15

Hoekprofiel binnen

Sandwichpaneel dikte [mm]	40-200
Ontwikkelde breedte [mm]	110



detail 2.9, 2.10

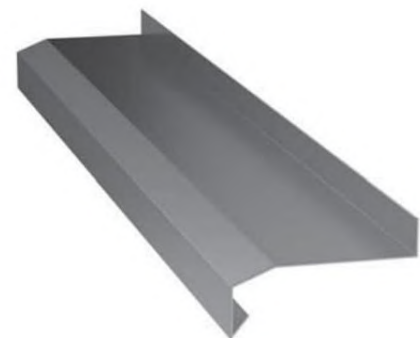
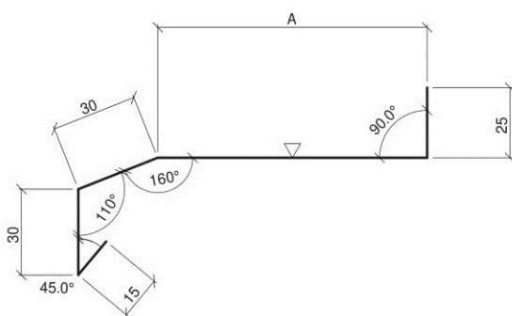


Artikelcode: OBPI-16

Kozijnprofiel - boven

Sandwichpaneel dikte [mm]	60	80	100	120
Ontwikkelde breedte [mm]	154	174	194	214
A [mm]	54	74	94	114

detail 2.10

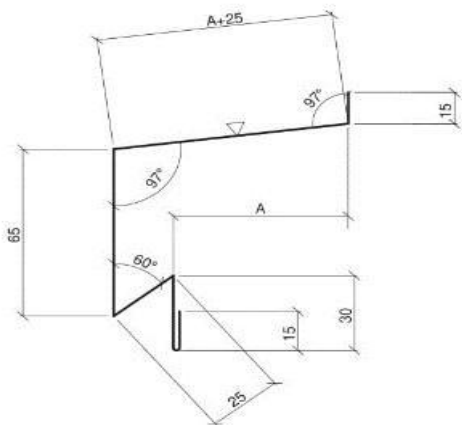


Artikelcode: OBPI-17

detail 2.10

Raamdorpel

Sandwichpaneel dikte [mm]	40-200
Ontwikkelde breedte [mm]	Breedte opgeven

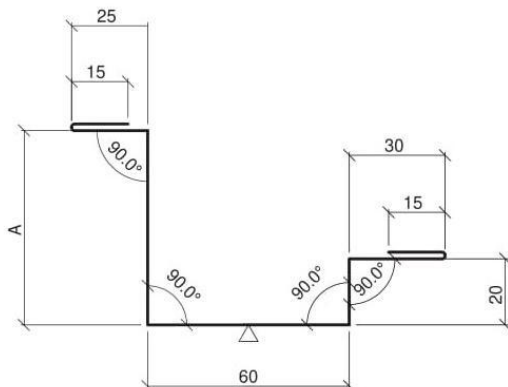


Artikelcode: OBPI-18

detail 2.10

Deurprofiel

Sandwichpaneel dikte [mm]	80	100	120
Ontwikkelde breedte [mm]	200	220	240
A [mm]	35	55	75



Artikelcode: OBD-1

Nokprofiel - buiten

Sandwichpaneel dikte [mm] 40-200

Ontwikkelde breedte [mm] 410



detail 3.3

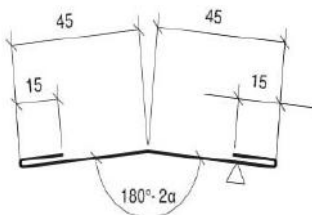


Artikelcode: OBD-2

Nokprofiel - binnen

Sandwichpaneel dikte [mm] 40-200

Ontwikkelde breedte [mm] 120



detail 3.3

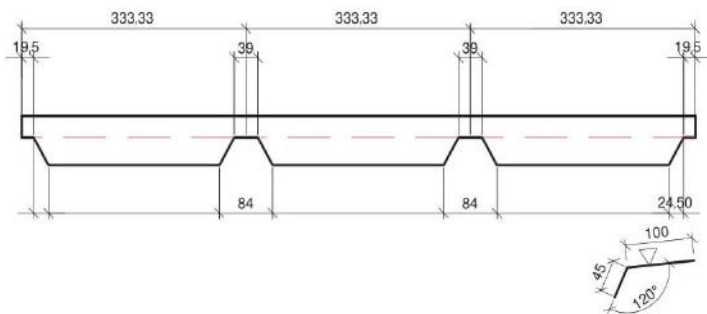


Artikelcode: OBD-3

Afdekprofiel - vertand

Sandwichpaneel dikte [mm] 40-200

Ontwikkelde breedte [mm] 145



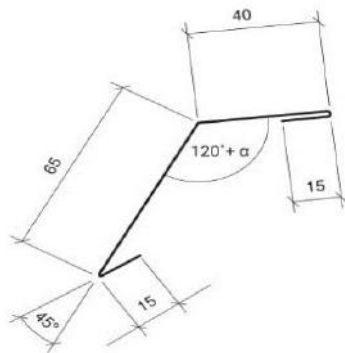
detail 3.3, 3.9, 3.13, 3.14



Artikelcode: OBD-4

Trapezium afsluitprofiel

Sandwichpaneel dikte [mm]	40-200
Ontwikkelde breedte [mm]	135



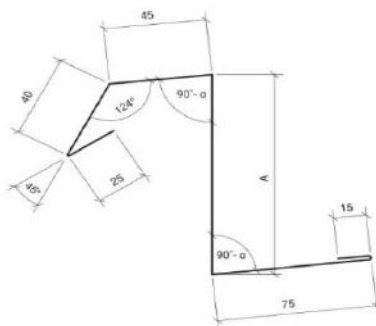
detail 3.5



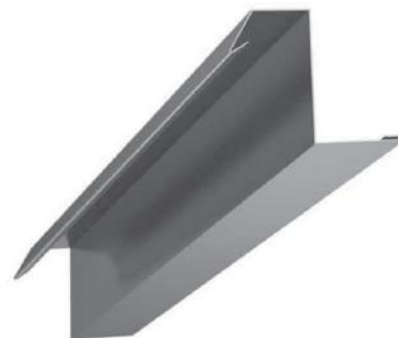
Artikelcode: OBD-5

Goot inloopprofiel

Sandwichpaneel dikte [mm]	40	60	80	100	120
Ontwikkelde breedte [mm]	242	262	282	302	322
A [mm]	42	62	82	102	122



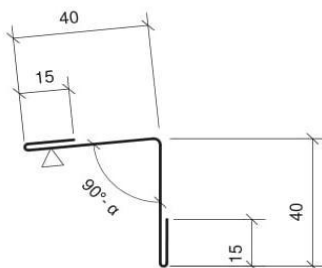
detail 3.5



Artikelcode: OBD-6

Hoekprofiel - binnen A

Sandwichpaneel dikte [mm]	40-200
Ontwikkelde breedte [mm]	110



detail 3.4, 3.5, 3.11, 3.12, 3.14

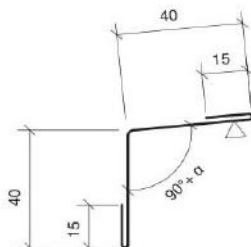


Artikelcode: OBD-7

Hoekprofiel - binnen B

Sandwichpaneel dikte [mm] 40-200

Ontwikkelde breedte [mm] 110



detail 3.5, 3.11

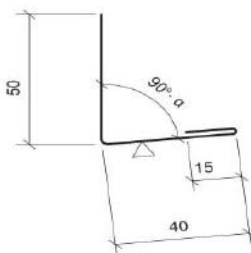


Artikelcode: OBD-8

Kantprofiel

Sandwichpaneel dikte [mm] 40-200

Ontwikkelde breedte [mm] 105



detail 3.6



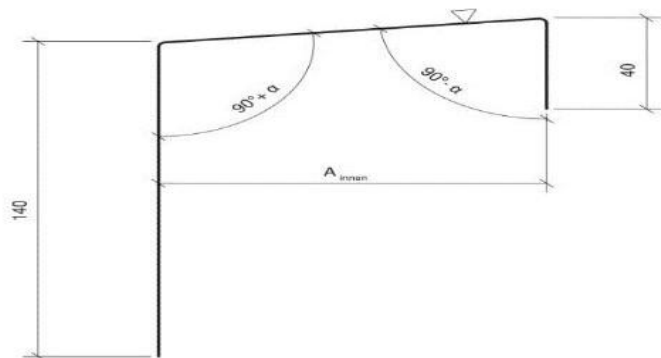
Artikelcode: OBD-9

Afdekprofiel

Sandwichpaneel dikte [mm] 40 60 80 100

Ontwikkelde breedte [mm] 228 248 268 288

A [mm] 45 65 85 105



detail 3.6

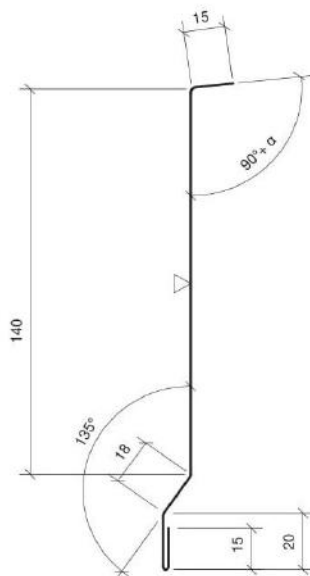


Artikelcode: OBD-10

Dakrandprofiel A

Sandwichpaneel dikte [mm]	40-200
---------------------------	--------

Ontwikkelde breedte [mm]	208
--------------------------	-----



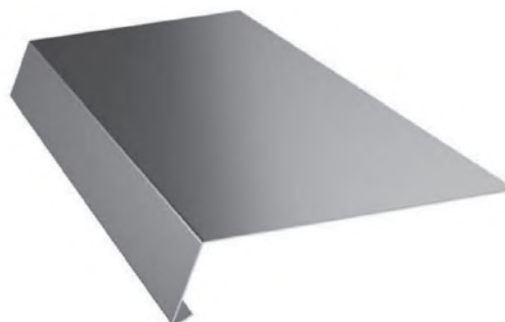
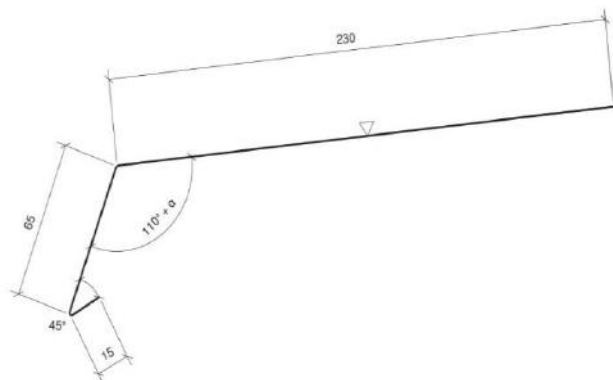
detail 3.6

Artikelcode: OBD-11

Dakrandprofiel B

Sandwichpaneel dikte [mm]	40-200
---------------------------	--------

Ontwikkelde breedte [mm]	310
--------------------------	-----

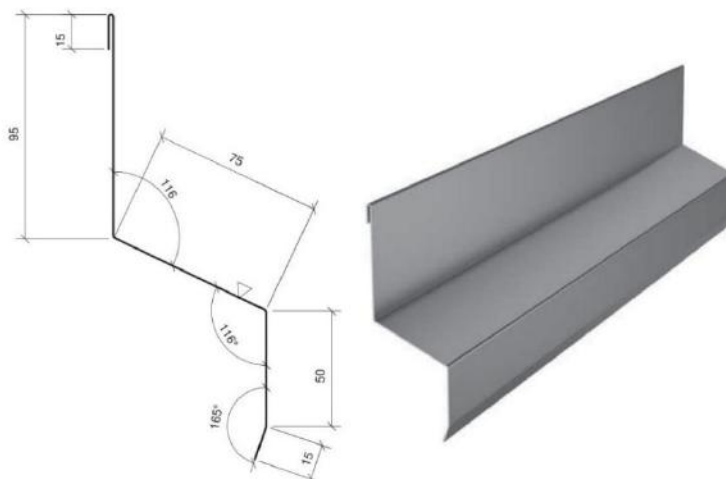


detail 3.6

Artikelcode: OBD-12

Dakrandprofiel C

Sandwichpaneel dikte [mm]	40-200
Ontwikkelde breedte [mm]	250

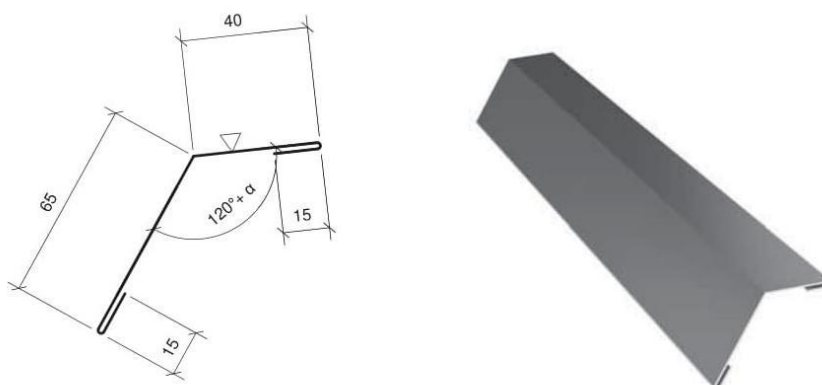


detail 3.8

Artikelcode: OBD-13

Dakrandprofiel D

Sandwichpaneel dikte [mm]	40-200
Ontwikkelde breedte [mm]	135

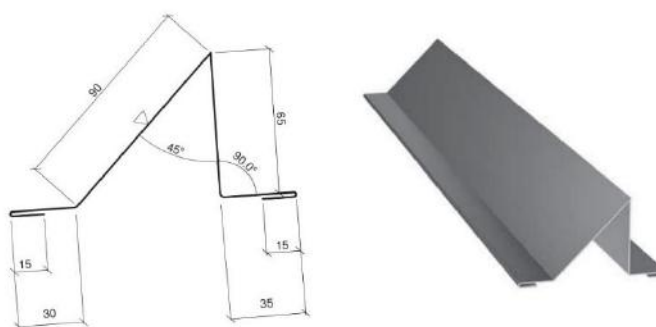


detail 3.8

Artikelcode: OBD-14

Sneeuwvanger

Sandwichpaneel dikte [mm]	40-200
Ontwikkelde breedte [mm]	250

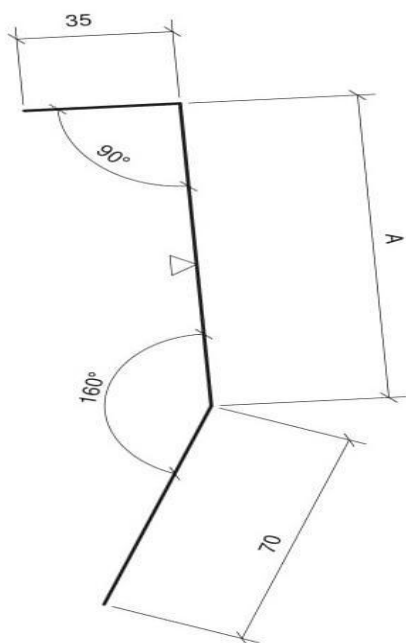


detail 3.7

Artikelcode: OBD-15

Stootprofiel A

Sandwichpaneel dikte [mm]	60	80	100	120
Ontwikkelde breedte [mm]	165	185	205	225
A [mm]	60	80	100	120

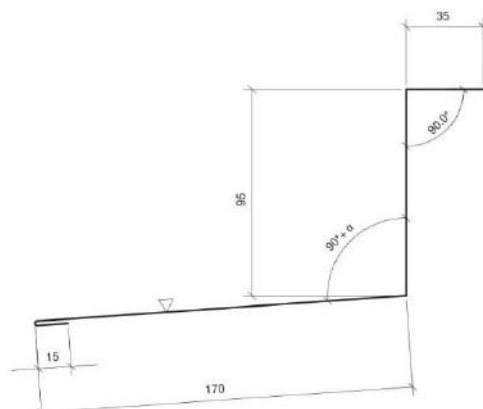


detail 3.8

Artikelcode: OBD-16

Stootprofiel B

Sandwichpaneel dikte [mm]	40-200
Ontwikkelde breedte [mm]	315



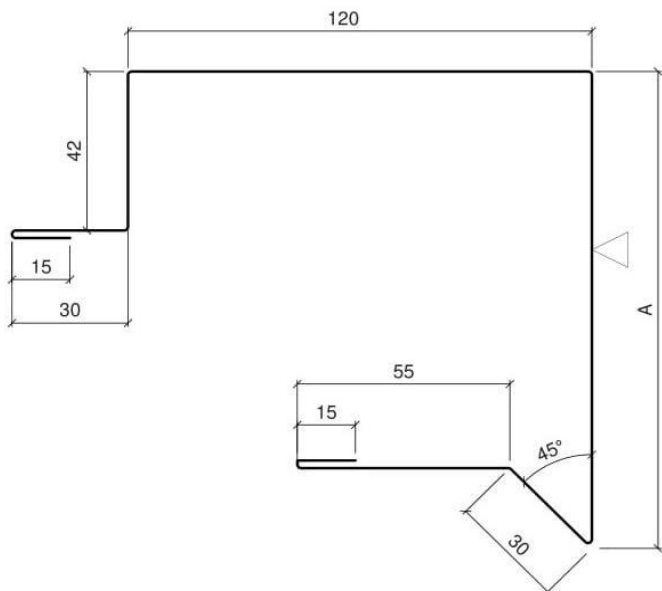
detail 3.9

Artikelcode: OBD-20

Dakrandprofiel

Sandwichpaneel dikte [mm]	40	60	80	100	120
Ontwikkelde breedte [mm]	413	433	453	473	483
A [mm]	106	126	146	166	186

detail 3.11; 3.12; 3.13; 3.14

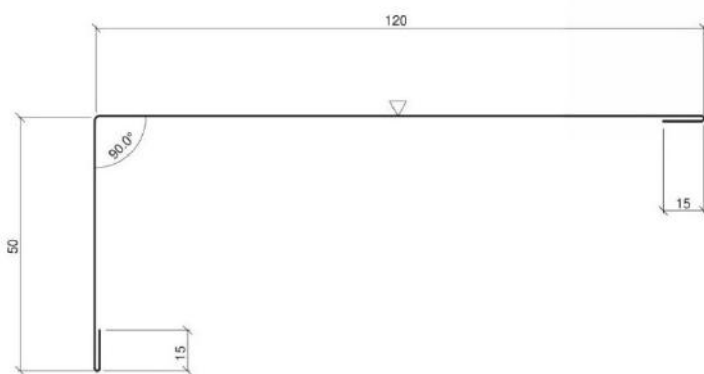


detail 4.7, 4.8

Artikelcode: OBCH-1

Hoekprofiel - buiten

Sandwichpaneel dikte [mm]	40-200
Ontwikkelde breedte [mm]	200

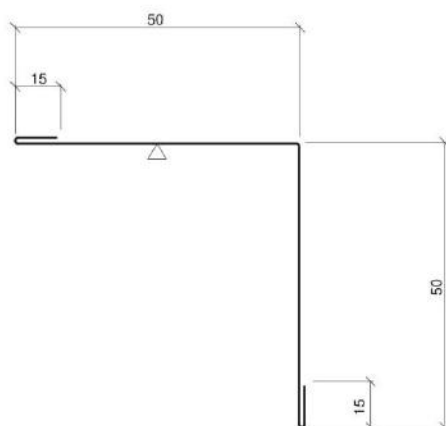


detail 4.11, 4.15

Artikelcode: OBCH-2

Hoekprofiel - binnen A

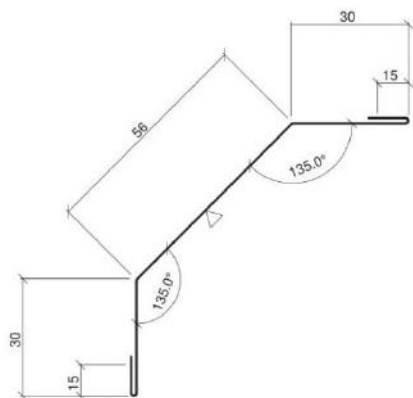
Sandwichpaneel dikte [mm]	40-200
Ontwikkelde breedte [mm]	130



Artikelcode: OBCH-3

Hoekprofiel - binnen B

Sandwichpaneel dikte [mm]	40-200
Ontwikkelde breedte [mm]	146



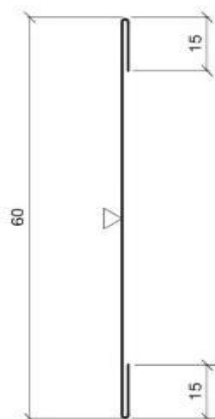
detail 4.7, 4.8



Artikelcode: OBCH-4

Afdekprofiel (vlak)

Sandwichpaneel dikte [mm]	40-200
Ontwikkelde breedte [mm]	90



detail 4.6

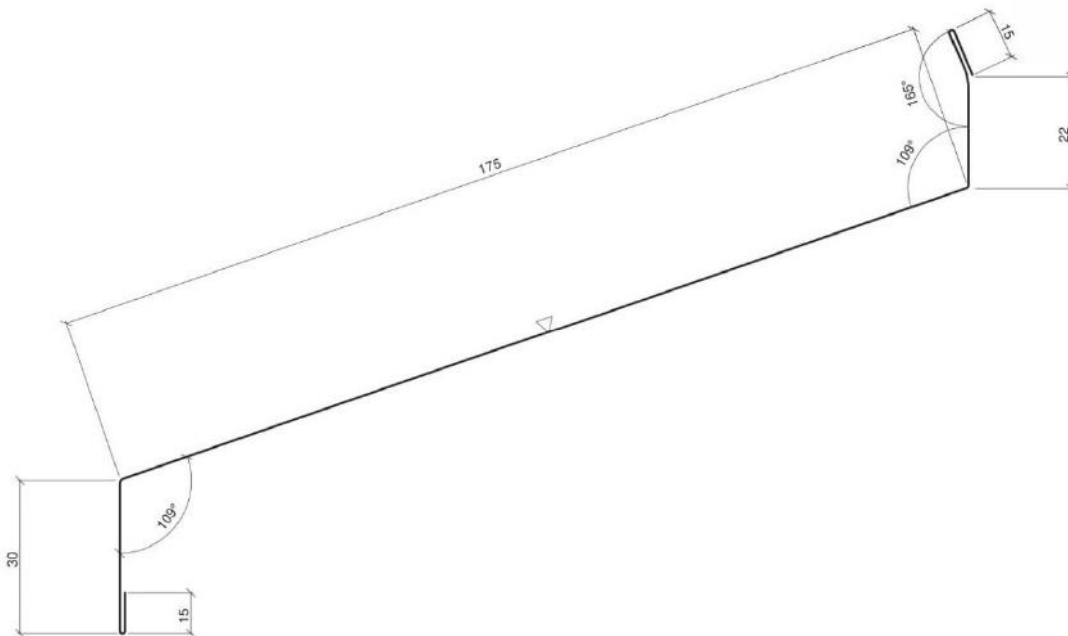


detail 4.14

Artikelcode: OBCH-5

Lekdorpel

Sandwichpaneel dikte [mm]	40-200
Ontwikkelde breedte [mm]	272



Nr.	Art. code	Omschrijving		Afbeelding
1	US-01	Profielvuller voor trapezium dak	PE TR-20mm	
2	US-02	PES-afdichtsbands (PES 20)	PES 20 x 3	
3	US-03	PES-afdichtsbands (PES 20)	PES 30 x 3	
4	US-04	PES-afdichtsbands (PES 20)	PES 40 x 3	
5	US -05	Kompriband	10 x 2	
6	Z 01	Zelfborende schroeven voor montage sandwichpanelen	62-260 mm	
7	Z 01 A	-Verzinkt - RVS		
8	Z 02	Zelfborende schroeven voor montage sandwichpanelen	62-260 mm	
9	Z 02 A	-Verzinkt - RVS		
10	Z 03	Schroeven voor montage zetwerk	19-25 mm	
11	Z 03 A	-Verzinkt - RVS		
12	Z 04	Schroeven voor montage zetwerk aan staalconstructie	19-25 mm	
13	Z 05	Schroeven voor sandwichpanelen aan gewapend beton	35-240 mm	
14	KLT	Kalot - trapeziumvormig	36-32	
15	NT	Klinknagel	NT	
16	DVP 120	Drukverdeelplaat L.120	120*31*9*1,5 mm	
17	DVP 200	Drukverdeelplaat L.200	200*31*9*1,5 mm	

Business Line

Sandwichpanelen
by Cladding Point



©2020 Cladding Point

Alle rechten voorbehouden. Niets uit deze opgave mag worden verveelvoudigd en/of openbaar gemaakt, op welke manier dan ook, zonder voorafgaande schriftelijke toestemming van Cladding Point.

Disclaimer:

Hoewel door Cladding Point uiterste zorgvuldigheid is betracht, kan Cladding Point geen aansprakelijkheid aanvaarden voor eventuele onjuistheden in deze uitgave. Eerder gepubliceerde documentatie komt hierbij te vervallen. Benamingen en omschrijvingen kunnen gewijzigd zijn. Kijk op claddingpoint.nl voor de meest recente productinformatie.

claddingpoint.nl